

CATALOGUE

in Metric Unit System

BULWAGGA ANCHOR

When you really need to be sure!



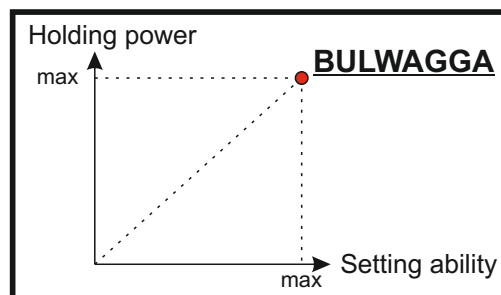
BULWAGGA ANCHOR

ABOUT BULWAGGA



Bulwagga is the new word in the world of anchors.

The concept behind the Bulwagga is fairly straightforward. Its three large flukes are designed to ensure that two flukes will always be properly aligned to dig into the bottom no matter how the anchor is oriented. The shank can pivot in the center of the anchor to help keep the load on the two working flukes equalized.



WHY BULWAGGA

TECHNICAL SPECS	DIFFERENCE with OTHERS	WHAT YOU GET
120° angle between flukes	Unlike the usual plow type anchors, Bulwagga Anchor lands onto the bottom always in right position ready to immediately pierce and plunge the seabed.	No drag till holding. The anchor holds closer to the location of drop.
Centrally symmetrical three flukes Unique 30° angle of flukes to the seabed	The side pulls are inconvenient for usual anchors to begin piercing the sea bed as they need first to position their flat flukes horizontal to seabed. However Bulwagga Anchor flukes, thanks to their unique 30° angle to the seabed, the side pulls by contrast scratches the bottom easing them to begin digging.	Sooner holding with less chain slack. Better holding despite the snake movement of the boat in windy and gusty conditions. Holding with less slack makes easier your anchorage in crowded bays and harbours.
Distantly designed flukes	Releases weed behind in between flukes, enabling the Bulwagga Anchor to reach and dig the bottom. In heavy weedy bottoms other type of anchors are simply useless as the weed stuck between their shaft and fluke preventing them to plunge into the seabed. This unique feature of Bulwagga Anchor makes it matchless compared to any other anchor design.	Less concern in determining the suitable location for anchorage, especially at night when it's hard to distinguish the weedy and sandy areas.

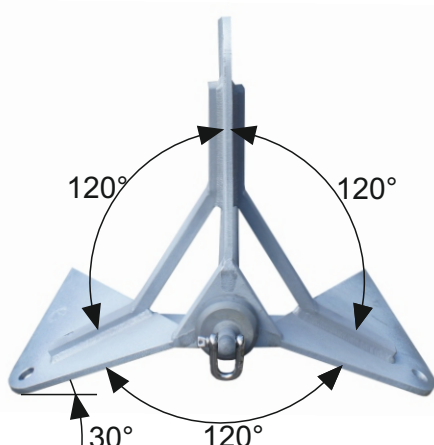
BULWAGGA ANCHOR

ABOUT BULWAGGA

TECHNICAL SPECS	DIFFERENCE with OTHERS	WHAT YOU GET
Free rotating shaft	No need to use swivel for chain-shaft connection, which is always an issue to worry about resistance.	Avoids using extra high cost element and simplifies the connection of the anchor to the chain. Avoids resistance worries about the swivel and its connection elements related to the swivel, namely from the chain to swivel and from the swivel to the anchor.
Free forth and back moving shaft	The Bulwagga Anchor's shaft is free to get retracted towards to opposite of its plunge direction and this unique feature avoids any concern that the anchor could be squeezed or trapped in rocky bottoms.	Less concern in the choice of anchorage location. Less trouble in rocky bottoms. Easy to retract.
The Bulwagga Anchor is made by welding plasma cut plate metal, unlike the usual cast metal anchors.	More flexible and much stronger than any other anchor compared to its weight.	Less weight on the bow of your boat
Plasma cut flukes from steel plate	Sharper edges, well pointed tips.	Cuts weed and sooner digging, less dragging in hard bottoms.



Plasma cut parts



Symmetrical three flukes



Free forth and back moving shaft

BULWAGGA ANCHOR

ANCHOR TYPES

Hot dip galvanized type.



Stainless steel types:



- made of 316L stainless steel
- made of 316Ti stainless steel

HOW TO CHOOSE THE RIGHT SIZE

Boat Length (m)	Boat Displacement (kg)	Anchor size and weight (kg)	Recommended Chain Size (mm)
Up to 6	Up to 500	Size 1 - 6,43 kg	6
6-9	500-2000	Size 2 - 10,23 kg	6 or 8
9-12	2000-6000	Size 3 - 15,72 kg	8 or 10
12-15	6000-9000	Size 4 - 23,17 kg	10 or 12
Up to 18	9000-12000	Size 5 - 38,21 kg	12 or 14

Shackles types which are fitting to Bulwagga Anchor are listed below those shackles can be used as a reference;

European Type Dee Shackles

6 mm: European type only large dee shackles

8/10/12/14: European type standart and large dee shackles

US Customary Unit Shackles

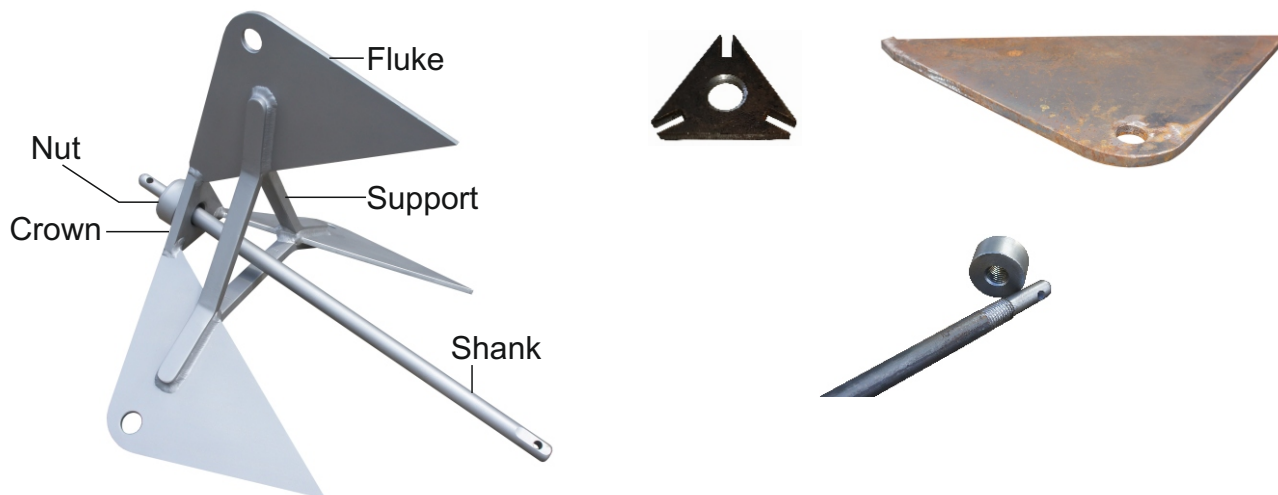
- Crosby G-213 / S-213 Round Pin Anchor Shackles
- Crosby G-209 / S-209 / G-210 / S-210 Screw Pin Anchor Shackles
- Crosby G-2130 / S-2130 Bolt Type Anchor Shackles

BULWAGGA ANCHOR

PRODUCTION & QUALITY

We manufacture Bulwagga anchors in the best quality to make you feel safe in any type of unpredictable conditions. Here below you can see our manufacturing process step by step.

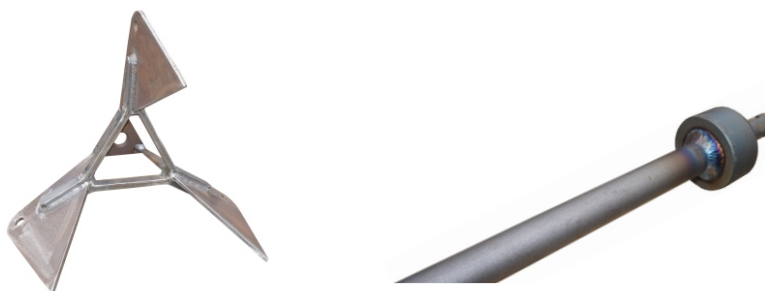
1. Crown, flukes, supports and crown are cut from steel plate. In shaft and nut threads are made for better holding (galvanized and stainless steel).



2. Parts undergo sandblasting. Through this process all the impurities on the surface are eliminated to ensure perfect welding quality (galvanized and stainless steel).



3. Products are ready to be welded. Welding is done by certified welders (manual welding). Welding type: TIG (tungsten inert gas) with pure Argon gas (galvanized and stainless steel).



4. Welded anchors are given for sandblasting again. In galvanized model it makes galvanize coat the surface evenly and stronger. Stainlesssteel models are given for passivation first after that to sandblasting. It makes surface smooth and good looking.



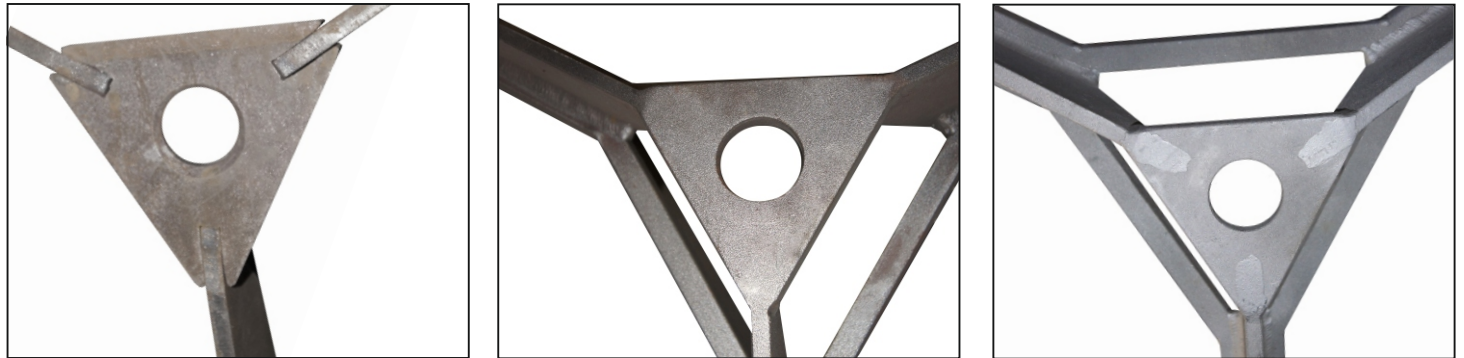
BULWAGGA ANCHOR

PRODUCTION & QUALITY

5. At last anchors are hot dip galvanized. Minimum galvanize thickness - 70 micron.



For your attention: In galvanized products you can see spots on crown (as you can see in the last photo). These are places where welding was done. In the first photo flukes are replaced into crown and welded. After that, the product is grinded and given for sandblasting. As you may see in the second photo, there is no difference between steel and welded area. Finally, products are galvanized. At this point some spots may appear on the surface of the anchor. This is unavoidable because different types of materials hold galvanize in different ways. Spots on and under crown can tell you about the welded area and also the strength of the anchor. You can see that every single inch is perfectly welded. ***You can have full trust for your BULWAGGA!***



Stainless steel finished product:

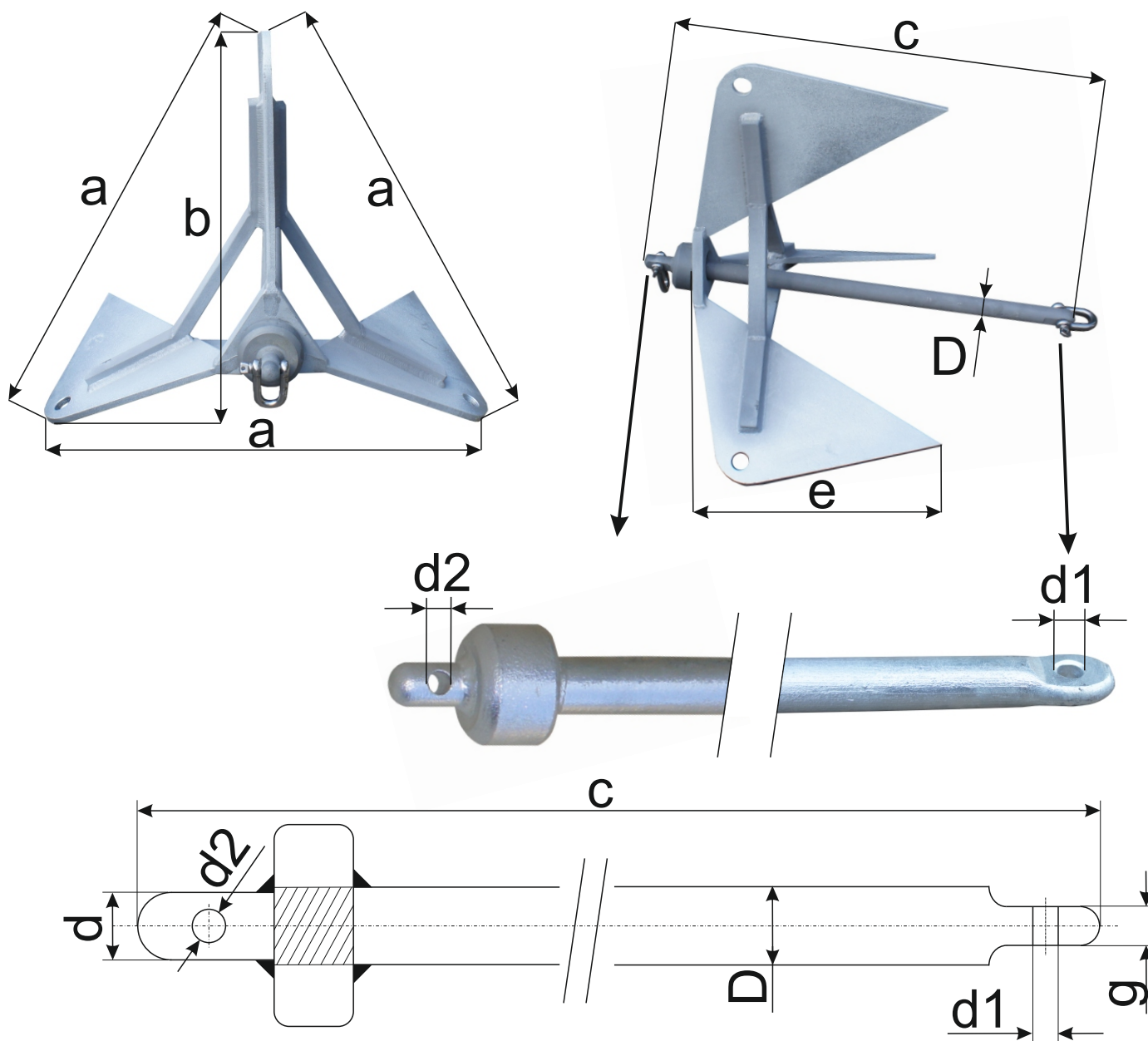


Additionally you can ask for third party inspection and obtain quality certificates for the Bulwagga anchors you buy.



BULWAGGA ANCHOR

ANCHOR DIMENSIONS



Anchor Size	a, mm	b, mm	c, mm	D, mm	d1, mm	d2, mm	e, mm	d, mm	g, mm
Size 1 - 6,43 kg	390	340	460	16	10	7	260	11	10
Size 2 - 10,23 kg	470	410	555	22	11,5	9	310	15	11
Size 3 - 15,72 kg	550	480	645	24	11,5	11	360	19	11
Size 4 - 23,17 kg	620	540	730	28	13,5	13,5	410	22	14,5
Size 5 - 38,21 kg	710	620	830	35	18	13,5	460	28	18

BULWAGGA ANCHOR

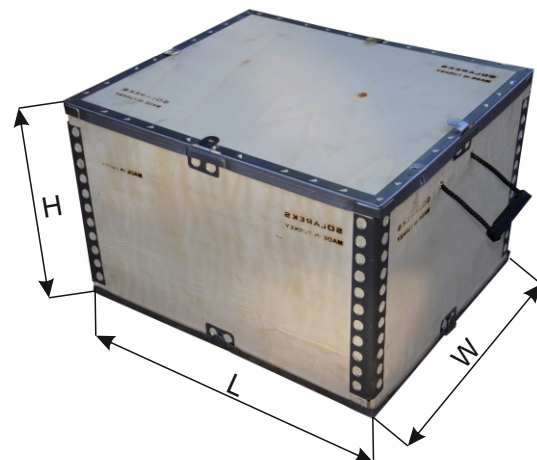
PACKAGING & WEIGHTS



Packaging



Labeling



Dimensions

Anchor Size	H, mm	L, mm	W, mm	Package weight*, kg
Size 1 - 6,43 kg	290	430	375	9,19
Size 2 - 10,23 kg	335	500	440	14,05
Size 3 - 15,72 kg	395	575	508	21,17
Size 4 - 23,17 kg	440	660	578	29,75
Size 5 - 38,21 kg	495	750	650	45,82

*- weight of package can differ $\pm 2\%$

CONTACTS

SOLAREKS SOLAR ENERGY SYSTEMS

Factory Address: İmes Sanayi Sitesi A Blok, 106. Sokak No: 48 Yukari Dudullu – İstanbul/ TURKEY
Postal Code: 34776

Phone: +90 216 314 85 80

Fax: +90 216 364 10 29

info@solareks.com

For English: +90 532 685 96 30

USA Sales: Dr. Aysegul Gunduz (Ms.)

Phone: +1 407 761 55 99, Email: aysegulgunduz97@gmail.com / aysegul@solareks.com

International sales & Technical support: Mr. Engin Kurtay

Phone: +90 542 213 39 47, WhatsApp: +90 545 942 01 54, Email: engin_kurtay@yahoo.com

www.bulwaggaanchor.com
www.solarekstermosifon.com

www.solareks.com.tr
www.solareksboiler.com

www.marine-boiler.com

All Rights Reserved. No part of this technical catalog may be reproduced, stored in a retrieval system, or transmitted, in any form or by any means, electronic, mechanical, photocopying, recording or otherwise, without the prior permission of the Copyright owner. For information regarding permission, write to: info@solareks.com